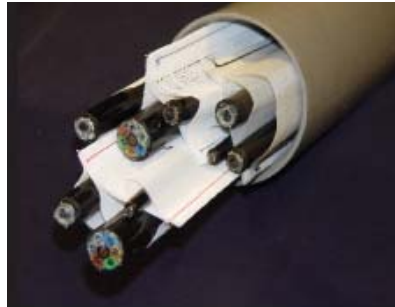




PERFECT FOR BRIDGES! HDPE inner duct expands and contracts at a greater rate than fiberglass conduit, placing undue stress on the conduit system. **MaxCell** has minimal expansion and contraction properties, making it a **perfect fit for under bridge applications**



Traditional



With MaxCell

MaxCell is the only flexible, multi-celled, textile inner duct system designed specifically for the network construction industry.

The unique textile construction allows **MaxCell** to conform to the shape of cables placed within, greatly reducing the wasted space associated with rigid HDPE inner duct.

MaxCell will:

- Reduce the number of conduits required for new network construction
- Minimize need for additional conduit in overlay applications
- Enable incremental cable deployment to match system requirements

MaxCell is a versatile solution for the complex problems faced by today's engineers, contractors, and network providers. **MaxCell** configurations include one, two, and three cell designs for use in 1.25" or larger conduits; and most are available in Standard, Plenum, and Detectable versions.

Over 100 million feet of **MaxCell** inner duct have been successfully installed around the globe in a variety of applications including:

- Cable TV
- Telecom
- Power/Utilities
- Municipalities
- University, Corporate, and Hospital campuses
- Military and Government installations



MaxCell saves Money:

- Reduces amount of duct space required by as much as 300%
- Reduces overall material costs
- Reduces installation time
- Reduces freight, handling, and storage costs up to 700%

MaxCell Meets Your Needs

- Standard, Detectable, and Plenum versions
- Multiple product configurations
- Accepts cables up to 1.37" OD
- Standard and custom lengths

MaxCell is Durable

- Tensile strength exceeds 2500 lbs.
- Melting point of 480 degrees, twice that of HDPE
- Resistant to ground chemicals and petroleum products
- Unaffected by mud, silt, or debris after placement of cable

MaxCell is Easy to Use

- No reel memory and will not spiral when installed with a swivel
- Designed to work with standard cable reel carriers
- Pre-lubricated for lower friction during product and cable installation
- Pre-installed color coded pull tapes for quick identification



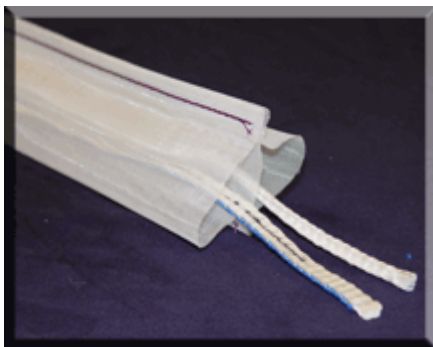
MaxCell maximizes space within new or existing conduit.



MaxCell is available in multiple configurations with multi-colored pull tapes.

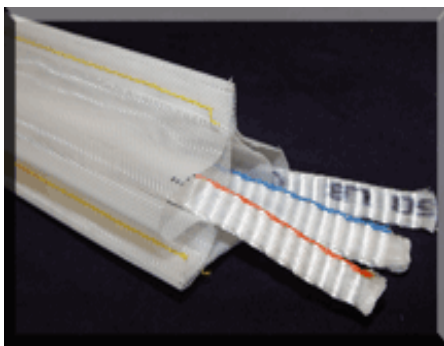
Combine all of MaxCell's attributes and you have a superior solution that is quickly becoming the new standard for innerduct.

2" 2 Cell



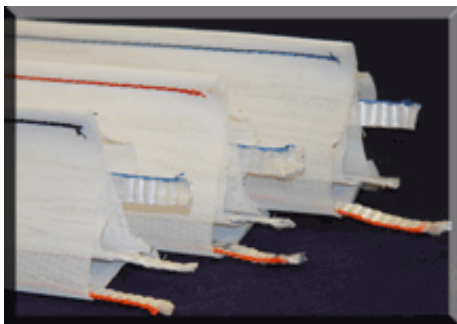
This product was designed for use in 1.5" and 2" ducts where two cables are being placed. Multi-pack applications should not occur, therefore it is only offered in one color. As the 1.5" applications are typically "confined" in terms of available space in the duct, pulling tensions can be higher than in the larger sized ducts, therefore the recommended and maximum pulling lengths are shorter than for the other products. The 2" 2 Cell has a more confined cell structure than the other MaxCell products. It can be used in larger ducts when the application allows, but should not be used for the longer pulls commonly associated with larger duct applications

2" 3 Cell



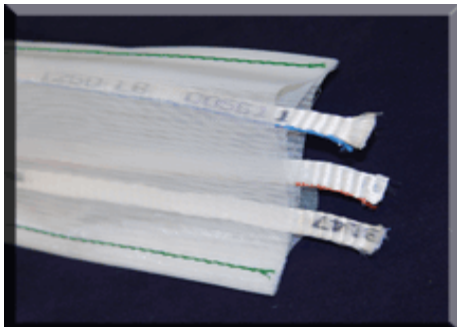
This product was designed for use in 1.5" and 2" ducts where two cables are being placed. Multi-pack applications should not occur, therefore it is only offered in one color. As the 1.5" applications are typically "confined" in terms of available space in the duct, pulling tensions can be higher than in the larger sized ducts, therefore the recommended and maximum pulling lengths are shorter than for the other products. The 2" 2 Cell has a more confined cell structure than the other MaxCell products. It can be used in larger ducts when the application allows, but should not be used for the longer pulls commonly associated with larger duct applications

3" 3 Cell



This product was designed for use in 3" or larger ducts. It is considered the product for most 4" conduit structures. Multiple combinations of large, medium, and smaller cable sizes are applicable and anticipated. Multi-pack applications are not required, but anticipated, therefore up to six colors are available. As long as space in the duct is available, and the sweeps and/or 90 degree turns are nominal, pulling tensions should not be effected and should be, in fact, far less than for placing conventional inner duct. As the number of 90-degree turns, or the aggregate cable OD, in an application increase, the pulling tensions nominally increase. Therefore, the recommended and maximum pull lengths decrease proportionally.

4" 3 Cell



This product was also designed for use in 3" or larger ducts. Multiple combinations of large and medium cable sizes are applicable and anticipated. Multi-pack applications are not required, but anticipated. Since larger cable applications are anticipated, the number of cables and packs that can be placed is reduced, therefore a smaller number of colors are available. Pulling tension commentary mirrors the 3" product but since larger cables require more force to pull, the recommended and maximum pull lengths are less than the 3" product.



MaxCell is offered in a variety of configurations and reel sizes. The part numbers used for ordering Maxcell are constructed using by as many as 14 characters:

M X C 3 4 5 6 R D 1 0 0 0 0

MX is the standard prefix to identify the product as a MaxCell product.

C is the Product Line Code.....**C**=Standard, **D**=Detectable, **P**=Plenum

3456 is the Product Configuration Code.....**3456**= 3" 3 Cell, **2002**= 2" 2 Cell,
2003= 2" 3 Cell, **4003**= 4" 3 Cell,
1251= 1.25" 1 Cell

RD is the color code.....**BK** = Black, **RD** = Red, **BL** = Blue,
YL = Yellow, **WH** = White, **PR** = Purple.

10000 is a standard footage*.....Standard Footages used in P/N

**The standard footages used in our part numbers do represent standard put up reel lengths, but they also represent pricing standards. Standard footages are also used for custom orders but such orders require textual definition to specific reel lengths.*

Product Std DR	Footage	Standard (MXC)	Plenum (MXP)	Detectable (MXD)
2" 2 Cell PR	250 Box 500-999 1000-2649 2650-5299 5300-9999 10,000+	MXC 2002 XX 250 MXC 2002 XX 500 MXC 2002 XX 1000 MXC 2002 XX 2650 MXC 2002 XX 5300 MXC 2002 XX 10000	MXP 2002 XX 250 MXP 2002 XX 500 MXP 2002 XX 1000 MXP 2002 XX 2650 MXP 2002 XX 5300 MXP 2002 XX 10000	MXD 2002 XX 250 MXD 2002 XX 500 MXD 2002 XX 1000 MXD 2002 XX 2650 MXD 2002 XX 5300 MXD 2002 XX 10000
2" 3 Cell YL	250 Box 500-999 1000-2649 2650-5299 5300-9999 10,000+	MXC 2003 XX 250 MXC 2003 XX 500 MXC 2003 XX 1000 MXC 2003 XX 2650 MXC 2003 XX 5300 MXC 2003 XX 10000	MXP 2003 XX 250 MXP 2003 XX 500 MXP 2003 XX 1000 MXP 2003 XX 2650 MXP 2003 XX 5300 MXP 2003 XX 10000	MXD 2003 XX 250 MXD 2003 XX 500 MXD 2003 XX 1000 MXD 2003 XX 2650 MXD 2003 XX 5300 MXD 2003 XX 10000
3" 3 Cell BK, RD, BL	250 Box 500-999 1000-2649 2650-5299 5300-9999 10,000+	MXC 3456 XX 250 MXC 3456 XX 500 MXC 3456 XX 1000 MXC 3456 XX 2650 MXC 3456 XX 5300 MXC 3456 XX 10000	MXP 3456 XX 250 MXP 3456 XX 500 MXP 3456 XX 1000 MXP 3456 XX 2650 MXP 3456 XX 5300 MXP 3456 XX 10000	MXD 3456 XX 250 MXD 3456 XX 500 MXD 3456 XX 1000 MXD 3456 XX 2650 MXD 3456 XX 5300 MXD 3456 XX 10000
4" 3 Cell GR	250 Box 500-999 1000-2649 2650-5299 5300-9999 10,000+	MXC 4003 XX 250 MXC 4003 XX 500 MXC 4003 XX 1000 MXC 4003 XX 2650 MXC 4003 XX 5300 MXC 4003 XX 10000	MXP 4003 XX 250 MXP 4003 XX 500 MXP 4003 XX 1000 MXP 4003 XX 2650 MXP 4003 XX 5300 MXP 4003 XX 10000	MXD 4003 XX 250 MXD 4003 XX 500 MXD 4003 XX 1000 MXD 4003 XX 2650 MXD 4003 XX 5300 MXD 4003 XX 10000



Reel Information (updated 7/1/03)

The information below details the various reel sizes utilized by the MaxCell Products. While the standard lengths are applicable for stocked product and standard pricing models, the maximum lengths are provided in order to assist you in working with customers on customized, cut-length special orders.

Reel Information for 3" 3 Cell Product *(Std/Plenum/Detectable)*

Reel Size	Type of Reel	Std. Product Length	Reel Weight w/Std Prod Length	Max Product on Reel
15"H X15W Box	Cardboard	250 ft	28 lbs	250
33"H x 15"W	Wood	500 ft	60 lbs	1,250
33" x 15"W	Wood	1,000 ft	98 lbs	1,250
54"W x 15"H	Wood	2,650 ft	270 lbs	4,400
72"H x 22"W	Steel	5,300 ft	478 lbs	7,100
72"H x 45"W	Steel	10,000 ft	840 lbs	13,500

Reel Information for 2" 2 Cell Product *(Std/Plenum/Detectable)*

Reel Size	Type of Reel	Std. Product Length	Reel Weight w/Std Prod Length	Max Product on Reel
15"H X15W Box	Cardboard	250 ft	20 lbs	250
33"H x 15"W	Wood	500 ft	45 lbs	1,800
33"H x 15"W	Wood	1,000 ft	68 lbs	1,800
54"W x 15"H	Wood	2,650 ft	192 lbs	7,500
72"H x 15"W	Steel	5,300 ft	314 lbs	7,500
72"H x 22"W	Steel	10,000 ft	535 lbs	12,000

Reel Information for 2" 3 Cell Product *(Std/Plenum/Detectable)*

Reel Size	Type of Reel	Std. Product Length	Reel Weight w/Std Prod Length	Max Product on Reel
15"H X15W Box	Cardboard	250 ft	25 lbs	250
33"H x 15"W	Wood	500 ft	55 lbs	1,200
33"H x 15"W	Wood	1,000 ft	89 lbs	1,200
54"W x 15"H	Wood	2,650 ft	248 lbs	5,300
72"H x 22"W	Steel	5,300 ft	475 lbs	7,900
72"H x 45"W	Steel	10,000 ft	750 lbs	15,000



Reel Information for 4" 3 Cell Product *(Std/Plenum/Detectable)*

Reel Size	Type of Reel	Std. Product Length	Reel Weight w/Std Prod Length	Max Product on Reel
15"H X15W Box	Cardboard	250 ft	30 lbs	250
33"H x 15"W	Wood	500 ft	64 lbs	1,000
33"H x 15"W	Wood	1,000 ft	107 lbs	1,000
54"W x 15"H	Wood	2,650 ft	295 lbs	3,700
72"H x 22"W	Steel	5,300 ft	525 lbs	5,950
72"H x 45"W	Steel	10,000 ft	930 lbs	12,500

Reel Information for Teardrop Product *(Std/Plenum/Detectable)*

Reel Size	Type of Reel	Std. Product Length	Reel Weight w/Std Prod Length	Max Product on Reel
15"H X15W Box	Cardboard	250 ft	15 lbs	250
33"H x 15"W	Wood	500 ft	35 lbs	1,200
33"H x 15"W	Wood	1,000 ft	48 lbs	4,500
33"W x 15"H	Wood	2,650 ft	91 lbs	4,500
33"H x 22"W	Wood	5,300 ft	178 lbs	6,500
54"H x 45"W	Wood	10,000 ft	230 lbs	15,000

Accessories - Installation Kits

- **MXCIK11** - Install kit for all products, *single pack pulls*
- **MXCIK21** - Install kit for all products, *double pack pulls*
- **MXCIK31CH** - Install kit for all products, *triple pack pulls*

Accessories - Installation Parts

- **MXCSW** - 1800 lb swivel, .875" OD
- **MXC2CH** - 2-Way chain harness
- **MXC3CH** - 3-Way chain harness



Accessories - Termination Products-Inflatable

- **MXCITB3** - Inflatable termination bag for a 3" conduit
- **MXCITB4** - Inflatable termination bag for a 4" conduit
- **MXCITB5** - Inflatable termination bag for a 5" conduit
- **MXCITB6** - Inflatable termination bag for a 6" conduit
- **MXCITT** - Inflation termination tool
- **MXCIGC** - CO2 Gas cartridge for MXCITT



Accessories - Termination Products- 100% Water Tight Split Plugs

- **MXCTP4** - 4" Duct water tight termination plug
- **MXCTP6** - 6" Duct water tight termination plug
- **MXCTBSET070** - Bushing set, MaxCell for .70" holes
- **MXCTBSET090** - Bushing set, MaxCell for .90" holes
- **MXCTBSET110** - Bushing set, MaxCell for 1.10" holes

